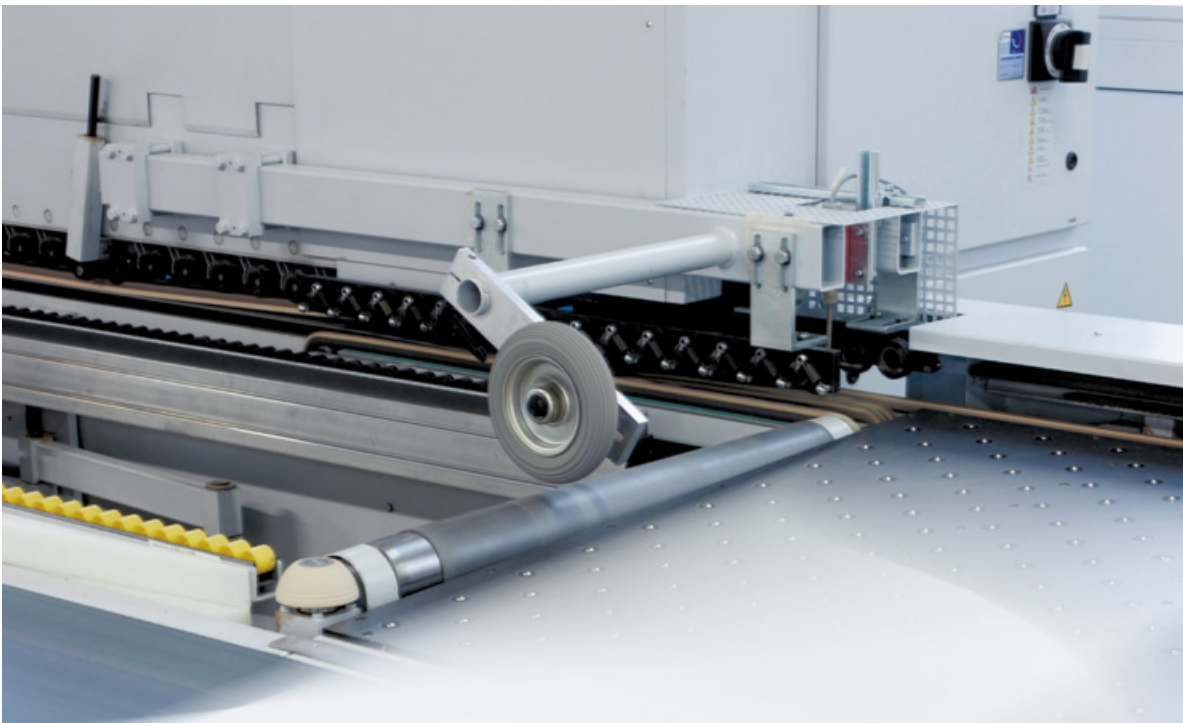


Rö

Röthlisberger
Innenausbau

Index



<u>Company</u>	<u>8</u>
<u>Sustainability</u>	<u>10</u>
<u>Engineering</u>	<u>12</u>

<u>Manufacturing</u>	<u>16</u>
<u>Logistics</u>	<u>20</u>
<u>Installation</u>	<u>22</u>

<u>Public premises and museums</u>	<u>26</u>
<u>Private residences</u>	<u>34</u>
<u>Retail spaces</u>	<u>42</u>

<u>Receptions, conference rooms and offices</u>	<u>48</u>
<u>Hotels, restaurants and bars</u>	<u>60</u>
<u>Custom furniture</u>	<u>68</u>



More than just a love of wood

«We always aim to find the best solution for our clients.
In the end it is the one they always wanted, but often not the
one they were looking for.»

Company

Swiss quality and enduring values

Röthlisberger started out as a small joinery in the village of Gümligen in 1928. Today we are a full-service supplier of sophisticated interior fittings with an in-house engineering department and our own specialised furniture collection.

Brothers Beat, Jan and Mark Röthlisberger are the fourth generation of the family to run the company, and do so

together with Roland Keller. We operate globally, but production takes place in Switzerland. Renowned architects and designers have been relying on our expertise and quality for many years. We inspire customers with our high design standards – both in Switzerland and around the world. This makes us very proud. Projects in New York we manage directly through our subsidiary in the USA. No matter what our customers' desires – we know how to meet their various needs and keep up with the increasing requirements of the market. Today, Röthlisberger represents innovation, exclusive design and exceptional Swiss quality.



Two generations of the family:
Chairman of the Board of Directors
Peter with his sons Jan, Mark and
Beat Röthlisberger.

Facts

- Founded in 1928
- Family company in the fourth generation
- 65 employees
- 9 trainees
- Swiss Made
- Local roots, international focus



All our production takes place in Gümligen near Berne.
This is our clear commitment to Switzerland as a business location.



Past and present: highly trained and experienced employees are a key factor in our company's success.
We currently employ 65 people.



100% solar energy: we produce all of our own power.

FSC or Precious Woods: we use certified materials.

Sustainability

Efficiency combined with environmental responsibility

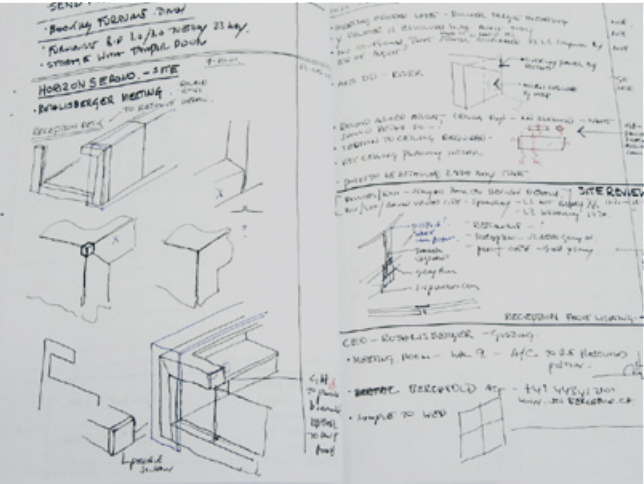
Energy, raw materials, staff and partnerships: we ensure that we operate in a sustainable manner in all of these areas. This strategy has proven successful and it shows the value of Switzerland as a production location.

At our premises, we heat 9,800 square metres of production and office space by recycling our own production waste for heating. This saves us over 150,000 litres of heating oil every year. At the same time, the modern electric filters in our energy centre provide for clean outgoing air. Our photovoltaic system produces more than 230,000 kilowatt hours of environmentally friendly solar power. We use this to cover 100% of our electricity consumption, thus saving 128 tonnes of CO₂. In terms of energy, we are entirely self-sufficient and provide for ourselves. This saves enough energy to power 300 family homes. With regard to raw materials, we only use certified wood and source it from local suppliers whenever possible.

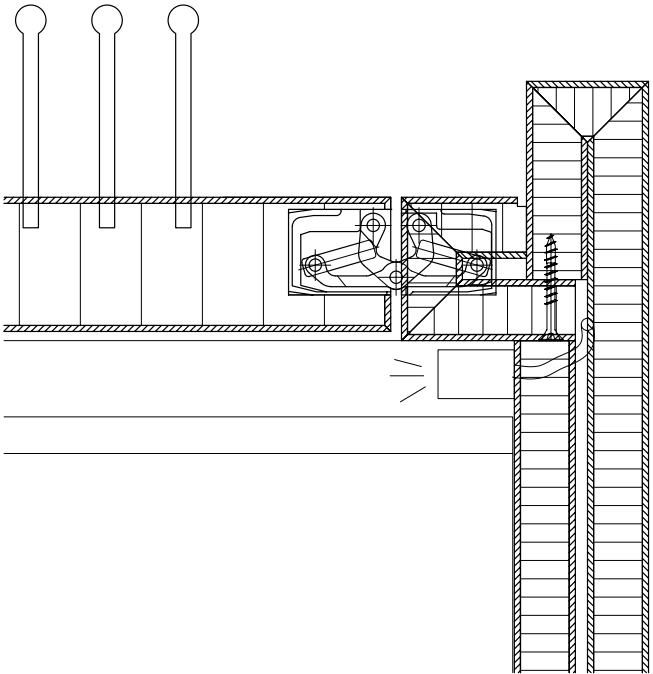
Facts

- Own photovoltaic system
- Wood heating with production waste
- Local suppliers and logistics partners
- 1 production site = short transport routes

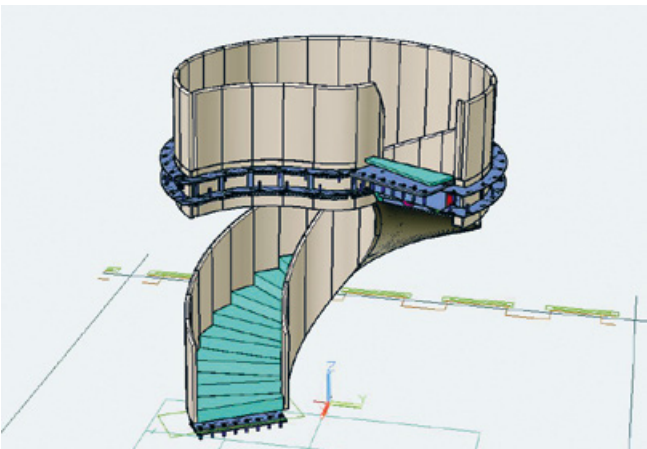
Rooms can reach their full potential with tailored interior fittings.



Engineering
Developing
solutions
together



Between architecture and production: based on our customers' ideas, the Engineering department produces prototypes and detailed plans for manufacture and installation.



By drawing on the expertise and experience of Röthlisberger Engineering, we make even complex ideas a reality. This results in tailored solutions for the optimum use of space.

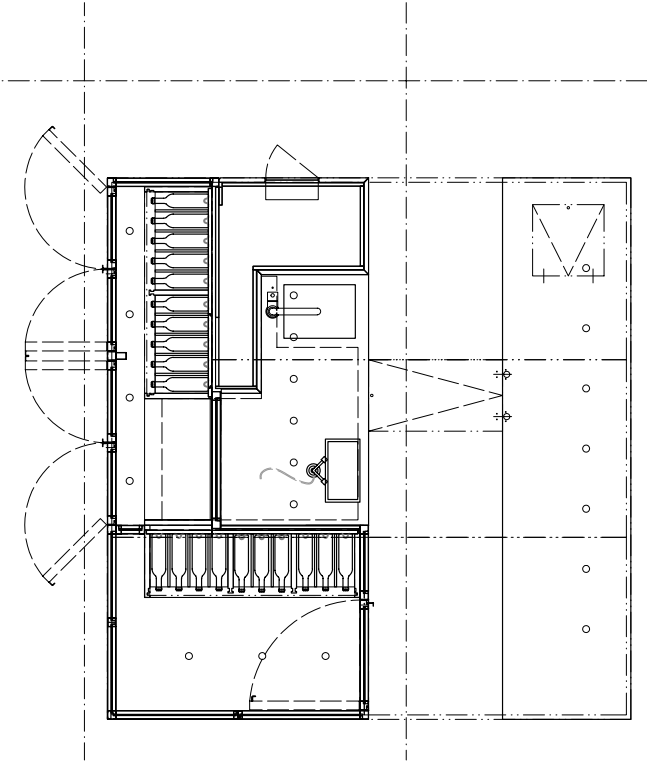
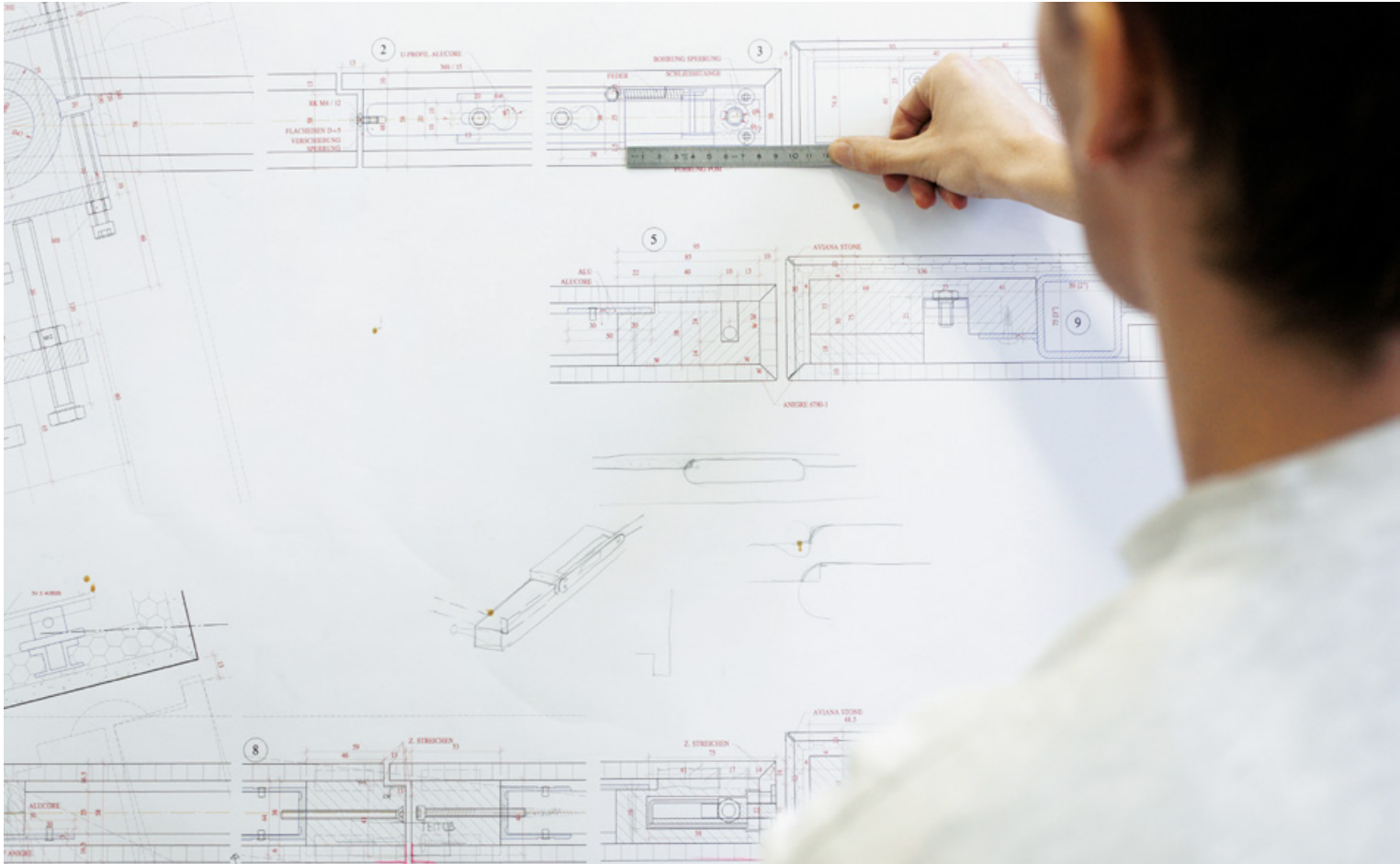
Our customers' requests are diverse and often unique, which requires flexibility and broad knowledge in the processing of various materials. Röthlisberger Engineering takes our customers' ideas and develops practical applications. In the process, we always ensure that the intended materials are appropriate for the constructions, that all the details fit precisely, and that optimum planning is ensured. The final product must be both aesthetically and technically captivating. We believe that good design perfectly incorporates functionality, construction and proportion. This is how Röthlisberger Engineering creates real added value.



Technology is integrated into interior fittings. Experienced partners and their expert knowledge help to produce elegant solutions.



The mix of materials is essential: a climate-controlled wine cellar made out of wood, glass, brass and stone.



Manufacture

Implementing ideas and appealing to all the senses

Cutting-edge technology and traditional craftsmanship form the basis for innovative solutions. The high standard for our furniture production guides us in all aspects of interior fitting.

In our workshop, our skilled team turns plans and drawings into reality. To this end, we make continuous investments into training for our employees and updates to our state-of-the-art machinery. This lays the foundations for an excellent working environment. In our in-house solid wood centre, quality management begins with the raw materials, and CNC machines guarantee the highest precision at the processing stage. We order additional materials such as metal, glass and stone from specialised suppliers. Just-in-time processing not only reduces warehousing, but also guarantees an ideal production flow.



Planning is everything: from the selection of materials, quality control and appropriate packaging, all of the processes mesh seamlessly.

Traditional joinery work is an essential part of our production.





Continuous quality control: the component parts undergo quality control during the entire manufacturing process.



State-of-the-art machines deliver precisely fitting component parts in all sizes and materials.



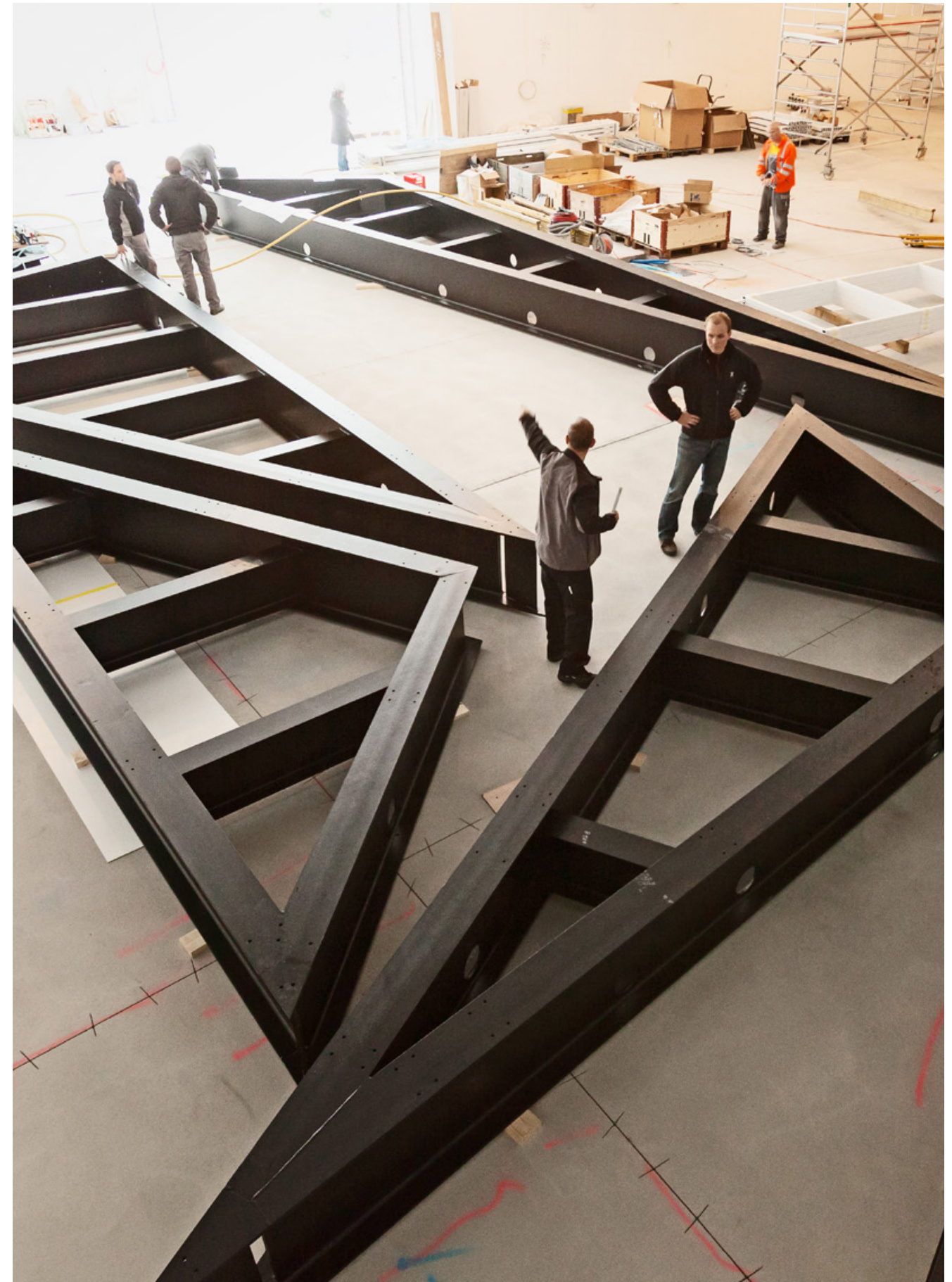
Logistics

From Gümligen to the world

We produce our components in Gümligen, near Berne. With the kind of comprehensive logistics befitting an international full-service provider, we ensure that Swiss quality reaches construction sites both within Switzerland and abroad.



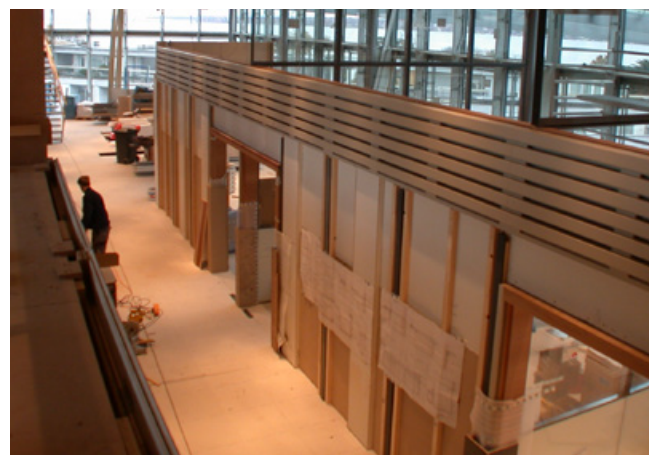
Shipping the individual components is a key service of our comprehensive logistics.



Some projects require large individual components. Thanks to our experience, we can deliver even the largest of parts safely to their destination.



Timber and metal construction teams work together closely during installation.

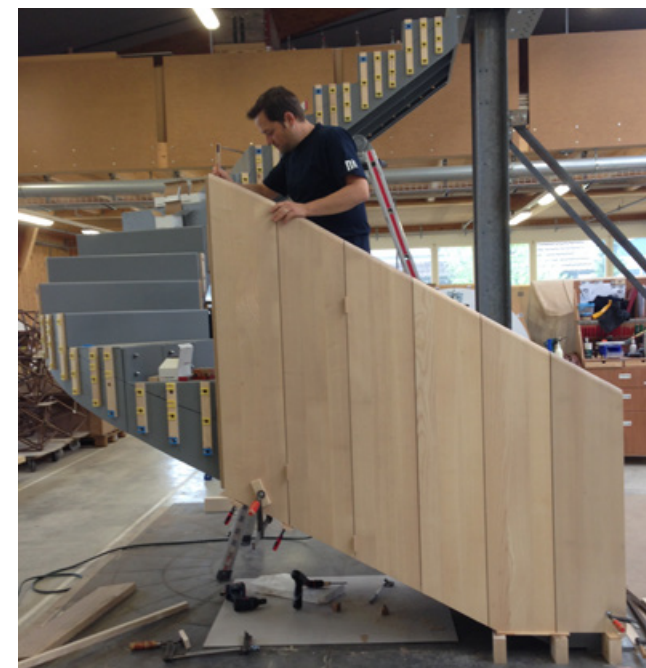


Installation

Our own specialists, on site

Our quality standards are high – not just at the planning and production stages, but also when it comes to on-site installation. That's why our own employees take responsibility for this, guaranteeing outstanding, exceptionally precise interior fittings.

In addition to high quality standards, flexibility and reliability are essential for any successful installation. We understand that carrying out work on our customers' premises demands respect and discretion, and we take care to act accordingly. Many of our orders involve installation abroad. We therefore work together with local partners during the planning and execution phases. Our experienced construction supervisors do not hand over responsibility, but ensure that the visual appearance is as expected and that every project is concluded to the highest standard.



Preparations for on-site installation: the individual interior fitting elements are assembled in Gümligen first to ensure the efficient realisation of projects.

Projects

· Public premises and museums	26
· Private premises	34
· Retail spaces	42
· Receptions, conference rooms and offices	48
· Hotels, restaurants and bars	60
· Custom furniture	68



CHACUN
EST RESPONSABLE
DE TOUT DEVANT TOUS
DOSTOEVSKI

International Red Cross, Geneva

Engineering, entrance hall, shop, reception, paper tube, display cabinets, benches
Materials: wood, metal, glass, cardboard



Abegg Foundation, Riggisberg

Engineering, exhibition walls, display cabinets

Materials: composite material, special surface coating, metal, glass, lighting



Church of St. Peter and Paul, Bern

Pews and podium

Materials: wood, felt



Laténium, Neuchâtel

Engineering, display cabinets, museum elements

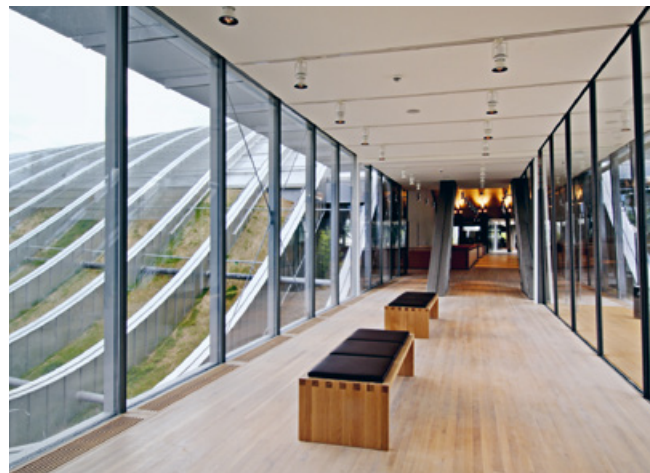
Materials: wood, colour coating, glass, stone, aluminium, plastic

VP Bank, Zurich

Reception, benches, doors, furnishings, wall panelling

Materials: wood, aluminium, composite material, leather, steel





Zentrum Paul Klee, Berne

Engineering, furnishing of offices and reception rooms
Materials: wood, metal, glass



International Red Cross, Geneva

Engineering, entrance hall, shop, reception, paper tube, display cabinets, benches
Materials: wood, metal, glass, cardboard

Private premises

Apartment, Barcelona

Furniture, walls, doors

Materials: wood, glass, stone, metal, colour coating

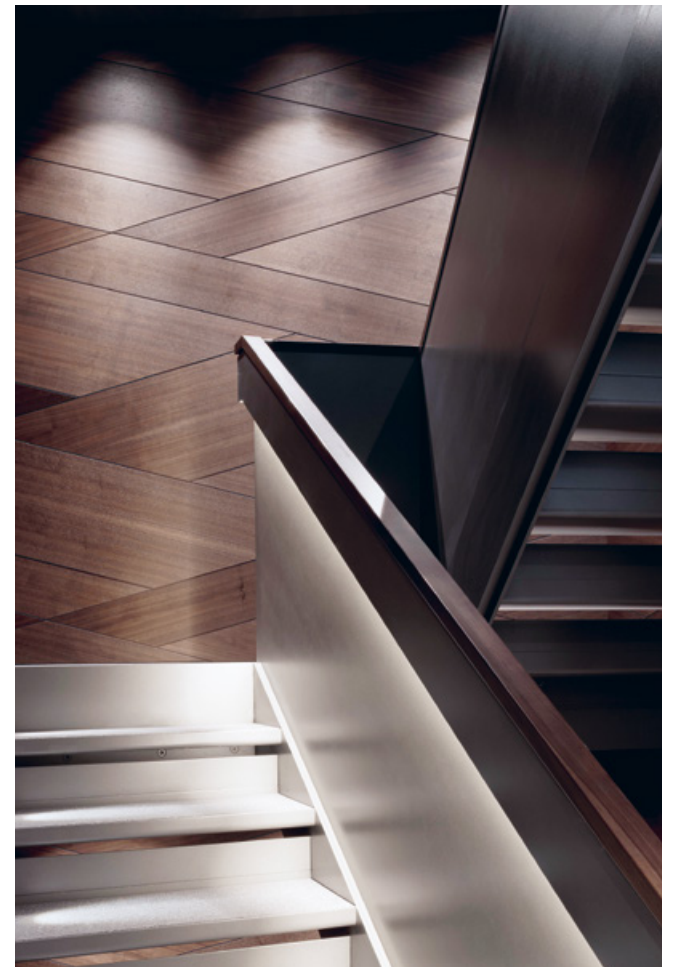


Apartment, New York

Wall panelling, doors, bar, wine cooler, dressing room, furniture, kitchen
Materials: wood, metal, stone, textiles, leather, lighting

Private residence, St. Moritz

Stairs, wall panelling, kitchen, doors, furniture
Materials: wood, metal, leather, glass, lighting





Apartment, St. Moritz

Engineering, doors, wall panelling, stairs, bathroom, kitchen
Materials: wood, glass



Apartment, New York

Wall panelling, doors, bar, wine cooler, dressing room, furniture, kitchen
Materials: wood, metal, stone, textiles, leather



Townhouse, New York

Engineering, wall panelling, kitchen, study, bathroom, dressing room, furniture
Materials: wood, glass, textiles, metal, lighting



Chalet, Wengen

Kitchen, bathroom, doors, wall panelling
Materials: wood, stone, colour coatings



Private residence, Zurich

Stairs, wall panelling, study, doors
Materials: wood, metal, lighting



Textile shop, Zurich

Engineering, sales furniture, wall panelling, cabinets
Materials: wood, glass, metal



Salem Hospital, Berne
Counter, cabinets
Materials: wood, mineral composite, glass, colour coating



Lancôme, Paris
Development of a new store concept, furniture, walls, counters
Materials: wood, glass, metal, aluminium, colour coating, lighting



Other Criteria Store, New York
Counters, display cabinets
Materials: wood, glass, aluminium, metal

Sunrise Shop, Zurich
Engineering, reception, counters, benches, tables
Materials: wood, leather, mineral composites, glass



Receptions,
conference
rooms and offices

Merck Serono, Geneva

Engineering and complete renovation of the CEO floor and restaurant
Materials: wood, glass, metal, leather, Cellbond, colour coating, lighting

International company, Geneva

Offices and reception rooms

Materials: wood, aluminium, stone, glass



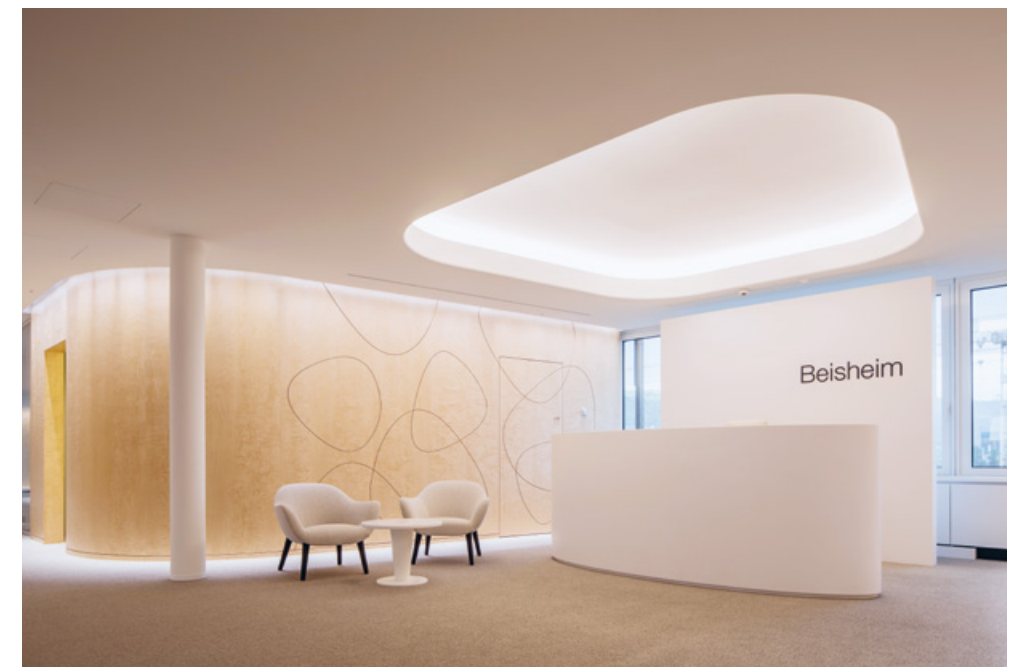
Merck Serono, Geneva

Engineering, reception counter

Materials: glass, metal



Zurich Development Center, Zurich
Reception and restaurant
Materials: wood, aluminium, mineral composite



Beisheim Foundation, Baar
Office rooms and reception
Materials: wood, mineral composite



House of Parliament, Berne
Engineering, conference tables and electronics
Materials: steel, wood, leather



Swiss Re, Zurich

Development of boardroom concept
Materials: wood, metal, textiles, lighting



Daimler-Benz, Berlin

Offices and reception rooms
Materials: wood, aluminium



Zurich Insurance, Zurich

Engineering, directors' boardroom, table, walls and electronics
Materials: wood, metal, glass, leather

House of Parliament Media Centre, Berne

Journalist seating, pigeonholes, reception, media technology
Materials: wood, leather, metal







Centre of Education for Nursing, Berne

Conference tables, tables, cafeteria and bar
Materials: wood, metal



Energy Radio studio, Zurich

Bar and lounge, studios, acoustic measures
Materials: wood, glass, metal, leather

École hôtelière de Lausanne, Lausanne

Reception and bar

Materials: wood, linoleum, mineral composite, metal, glass



Zurich Development Center, Zurich

Reception and restaurant

Materials: wood, aluminium, mineral composite

Restaurant Ornellaia, Zurich

Restaurant furnishings, wine bar, stairs, counters
Materials: wood, glass, metal



Restaurant Le Coubertin, Biel/Bienne

Restaurant and bar
Materials: wood, aluminium, lighting

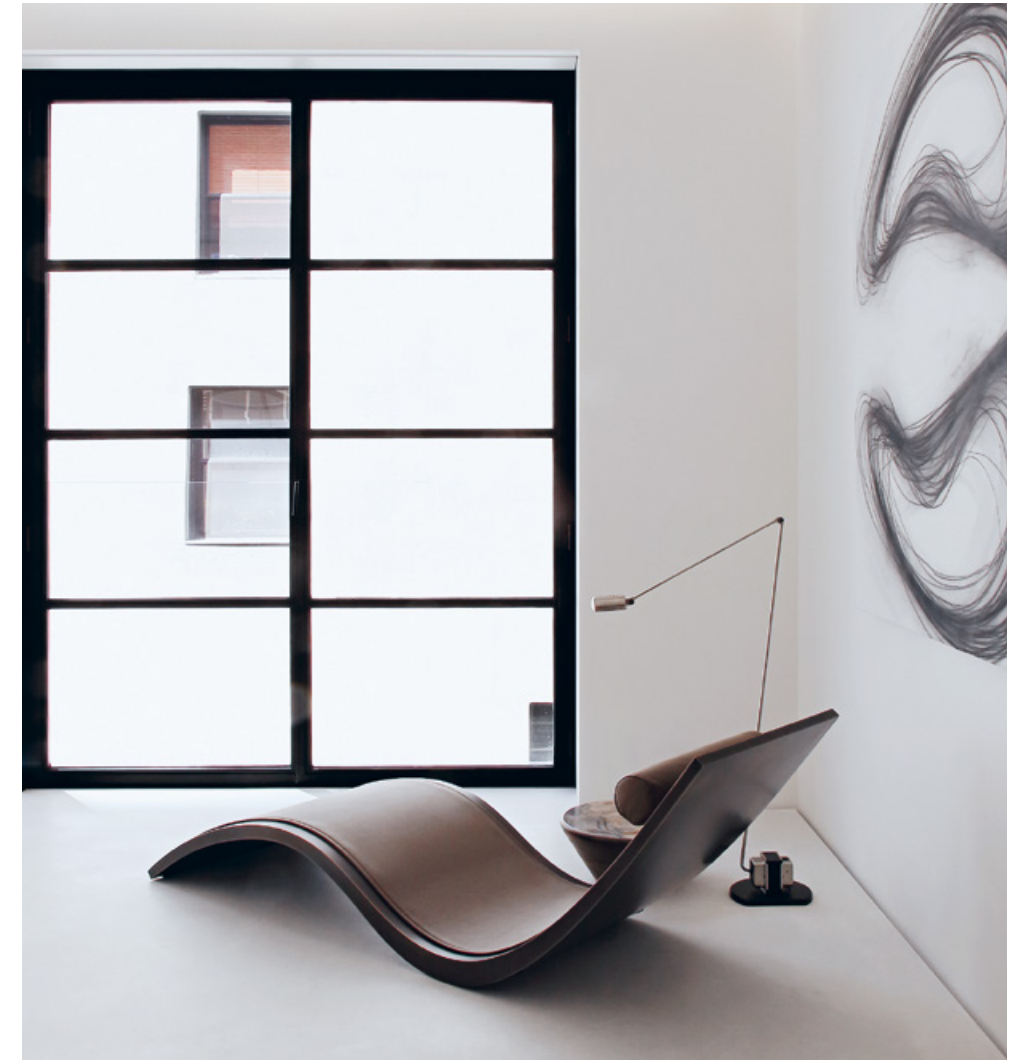
Custom furniture



Private boat, Lake Biel



Four-poster bed, Barcelona



Lounger, New York



Display cabinets, Riggisberg



Vanity table, Barcelona



Executive furniture, Geneva

Index of architects

p. 26/27
International Red Cross, Geneva
Architecture: Shigeru Ban Architects, Atelier Oi

p. 28/29
Abegg Foundation, Riggisberg
Architecture: OAP Offermann Architektur & Projekte

p. 29
Church of St. Peter and Paul, Berne
Architecture: Martin Kurth AG

p. 30
Laténium, Neuchâtel
Architecture: Atelier Oi

p. 30/31
VP Bank, Zurich
Architecture: Ramseier & Associates LTD.

p. 32
Zentrum Paul Klee, Berne
Architecture: Renzo Piano RPBW, arb Architekten AG

p. 32/33
International Red Cross, Geneva
Architecture: Shigeru Ban Architects, Atelier Oi

p. 34/35
Apartment, Barcelona
Furniture, architecture: Efrem López + Adrià Jurado

p. 36
Apartment, New York
Architecture: Plain Space, Inc.

p. 37
Private residence, Zurich
Architecture: Steigerconcept AG

p. 38
Apartment, St. Moritz
Architecture: Ruch & Partner Architekten AG

p. 38/39
Apartment, New York
Architecture: Plain Space, Inc.

p. 40/41
Townhouse, New York
Architecture: Haute Architecture DPC

p. 40/41
Chalet, Wengen
Architecture: ANS Architekten und Planer SIA AG

p. 41
Private residence, Zurich
Architecture: Edelmann Krell Dipl. Architekten ETH SIA

p. 42/43
Textile shop, Zurich
Architecture: T & R Haussmann

p. 44
Salem Hospital, Berne
Architecture: Lüscher Egli AG

p. 44/45
Lancôme, Paris
Architecture: Peter Marino Architect

p. 46
Other Criteria Store, New York
Architecture: Michael Schranz, Studio Christian Wassmann

p. 47
Sunrise Shop, Zurich
Architecture: Vizona AG

p. 48/49
Merck Serono, Geneva
Architecture: Mackay + Partners

p. 50
International company, Geneva
Office and architecture: Shigeru Ban Architects, Atelier Oi

p. 51
Merck Serono, Geneva
Architecture: Mackay + Partners

p. 52/53
Zurich Development Center, Zurich
Architecture: Ramseier & Associates LTD.

p. 53
Beisheim Foundation, Baar
Architecture: Ramseier & Associates LTD.

p. 54/55
House of Parliament, Berne
Architecture: Aebi & Vincent Architekten SIA AG

p. 56
Swiss Re, Zurich
Architecture: Jasmin Grego + Stephanie Kühnle Architektur GmbH

p. 56/57
Daimler-Benz, Berlin
Architecture: Kreplin und Duwensee Gesellschaft von Architekten mbH

p. 58
Zurich Insurance, Zurich Engineering
Architecture: Ramseier & Associates LTD.

p. 59
House of Parliament Media Centre, Berne
Architecture: Aebi & Vincent Architekten SIA AG

p. 60/61
Zurich Airport, Zurich
Architecture: Itten+Brechbühl AG

p. 62/63
Centre of Education for Nursing, Berne
Architecture: Boegli Kramp Architekten AG

p. 63
Energy Radio studio, Zurich
Architecture: Dyer-Smith Frey AG, Mint Architecture AG

p. 64
École hôtelière de Lausanne, Lausanne
Architecture: Jordi + Partner AG

p. 64/65
Zurich Development Center, Zurich
Architecture: Ramseier & Associates LTD.

p. 66
Restaurant Ornellaia, Zurich
Architecture: Tilla Theus und Partner AG

p. 66/67
Restaurant Le Coubertin, Biel/Bienne
Architecture: GLS Architekten AG

p. 68/69
Private boat, Lake Biel
Architecture: Atelier Oi

p. 70
Four-poster bed, Barcelona
Architecture: Efrem López + Adrià Jurado

p. 70
Display cabinets, Riggisberg
Architecture: OAP Offermann Architektur & Projekte

p. 71
Lounger, New York
Architecture: Haute Architecture DPC

p. 72
Vanity table, Barcelona
Architecture: Efrem López + Adrià Jurado

p. 73
Executive furniture, Geneva
Architecture: Mackay + Partners

Röthlisberger
Innenausbau

CH-3073 Gümligen
Tel. +41 31 950 21 30
www.roethlisberger.ch

Content: Röthlisberger Innenausbau
Concept & design: Nordland.ag
Text: Alain Hauert
Print: Stämpfli AG, Bern